

LABETTE

 **CARDINALS**

Where it's all about you!



WWW.LABETTE.EDU

FACTS & FIGURES

1923

LCC Founded

14:1

Student to Faculty
Ratio

1,375

Total Scholarships
Awarded 2019-20



Home of the Cardinals

“I’m thankful to be at LCC all the way from Nigeria.
LCC was HOME AWAY FROM HOME for me.”

Upe Atosu

Roadtrip DISTANCE TO



ATHLETICS

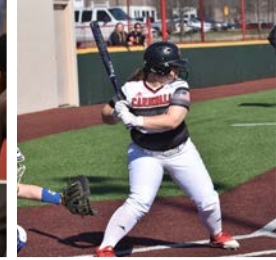
- NJCAA Jayhawk Conference
- New Multi-Million Dollar Athletic Complex
- Watch games at www.labette.edu/athletics/media.html

MEN'S SPORTS

BASEBALL
BASKETBALL
WRESTLING

WOMEN'S SPORTS

BASKETBALL
SOFTBALL
VOLLEYBALL



STUDENT ORGANIZATIONS

No matter what you're into, it's likely there's a group of people who share your interests. LCC student organizations are involved with on-campus & off-campus activities to make a difference in the lives of other students & the community. Many clubs participate in state & national competitions & conventions, with opportunities to travel.

**THIS IS WHERE
YOUR INTERESTS**
*get even more
interesting.*

*Campus Activities Board
Chess Club
Dental Assisting Club
eSports Club
Dungeons & Dragons Club
Gay Straight Alliance
Graphic Design Club*

*Phi Beta Lambda (PBL)
Phi Theta Kappa (PTK)
Physical Therapist Assistant Club
Radiography Club
Student Ambassadors
Student Government Association
Student Nurse Organization*

CAMPUS VISIT

The best way to know what opportunities await you at LCC is to visit campus in person! Visiting campus allows you to tour our state-of-the-art facilities, meet an advisor, speak with financial aid, and so much more! This will help you make a confident decision about your future! If you cannot make it to campus in person, there are also options to schedule a virtual appointment with a recruiter and/or check out a virtual campus tour. Schedule a Campus Visit by going to the Admissions Department virtual resources webpage at www.labette.edu/admissions/virtual-resources.html

BECOME A CARDINAL

- **Complete the FREE Admissions Application** at www.labette.edu by clicking on the “Apply Online” option under the Admissions dropdown menu.
- **Fill out the LCC Scholarship Application.** Scholarships are limited, early application is imperative! For students beginning classes in the fall (August), the scholarship application is available beginning October 1st the year prior. The scholarship application can be submitted online at bit.ly/lccscholarships
- **Submit the Free Application for Federal Student Aid (FAFSA)** for the academic year you plan to attend LCC. The FAFSA is available at www.studentaid.ed.gov/sa/fafsa
- **Request to have your official transcripts** from any previous institutions sent to the LCC Registrar’s Office. This includes your official high school transcript or the equivalent and any previous college transcripts, if you have attended college elsewhere.
- **Find housing.** Students who do not plan to commute should apply to live at the Cardinal Villas, LCC’s recommended student housing. More information can be found by visiting www.thecardinalvillas.com.
- **Schedule an appointment with an academic advisor** to discuss enrollment. Your advisor will determine if any placement testing, such as the ACCUPLACER, is necessary prior to enrolling and help you create a class schedule.

CHEROKEE CENTER

Labette Community College Cherokee Center, located at the intersection of US 69 & Hwy 400 near Pittsburg, provides an additional and convenient location for students in Southeast Kansas. The Cherokee Center offers a wide variety of general education courses and the Dental Assistant Program.



CARDINAL VILLAS

The Cardinal Villas is the recommended student housing community at the LCC Main Campus. They offer fully furnished units and all utilities included in one fixed price. The facility offers a student-centric social room, state-of-the-art fitness center and more! Unlike other apartments, we offer individual leases, a roommate matching program, and an academic year leasing option.

There are two and four bedroom suite options. Every suite comes with a bed, desk, and desk chair as well as a couch in each living room

Every bedroom has its own private, full bathroom.



THEVILLAS

www.thecardinalvillas.com
(620) 717-4249

MAKE
CAMPUS *home.*



STUDENT FOOD PANTRY

The LCC student food pantry was started by the Phi Theta Kappa Honor Society to aid in stretching a student's tight grocery budget. The pantry allows any LCC student to receive a limited amount of food and household necessities each week. There are two convenient locations, one on the Main Campus in Parsons and another at the Cherokee Center.

SCHOLARSHIPS

Incoming students must have their financial aid file complete to be eligible for scholarships.

What types of Scholarships are available?

Academic, Activity, Foundation, General, International, and Labette County Assistance are available, as well as book scholarships.

Labette County residents are eligible to receive full tuition paid up to 16 credit hours per semester at LCC. Student residents must complete the scholarship application to be eligible. Reapplication and 2.5 cumulative GPA are necessary for renewal.

FINANCIAL AID

At LCC, we strive to make college affordable for everyone! In fact, **95% of first-time, full-time students qualify for financial aid.**

Complete your education at nearly 1/2 the cost of universities! Our programs include scholarships, Federal Pell Grants, Federal Supplemental Education Grants, Direct Loans, Federal and Institutional Workstudy.

\$587,621

**INSTITUTIONAL
SCHOLARSHIPS**

\$105,254

**FOUNDATION
SCHOLARSHIPS**

COST PER SEMESTER

	TUITION/ FEES*	BOOKS/ SUPPLIES (EST.)	TOTAL COST
KANSAS RESIDENTS	\$1308	\$525	\$1833
AR, MO, OK RESIDENTS	\$1560	\$525	\$2085
OUT-OF-STATE RESIDENTS	\$1608	\$525	\$2133
INTERNATIONAL STUDENTS	\$2316	\$525	\$2841

*based on 12 credit hours & additional fees may apply

For a full list of scholarships and deadlines, visit www.labette.edu/financialaid

WHERE IT'S ALL ABOUT *affordability*

DEGREES



Accounting
Art
Biology
Business Administration
Business Administrative Technology
 · Administrative Assistant
 · Medical Administrative Assistant
Chemistry
Communication
Criminal Justice
Dental Assistant

Education
 · Early Childhood Education
 · Elementary Education
 · Secondary Education
Engineering Technology
English
Exercise Science
General Studies
Graphic Design Technology
Health Science
History
Mathematics
Nursing
Physical Therapist Assistant

Physics/Engineering
Preprofessional Programs
 Pre-BSN (Professional Nursing)
 Pre-Medicine
 Pre-Pharmacy
Psychology
Radiography
Respiratory Therapy
Social Work
Sociology
Welding



CERTIFICATES

Business Administrative Technology
 · Clerical Assistant
 · Medical Office Assistant
Dental Assistant
Electronics Technology
Graphic Design Technology

Sonography
 · General Sonography
 · Vascular Sonography
Welding
 · Level I Welding
 · Level II Welding

CAMPUS RESOURCES

CASE MANAGEMENT

Case management at its very core is about helping students overcome obstacles they encounter in their lives. The goal is to assist students with a solution-focused approach. The Case Manager at LCC is concerned about difficulties students are facing AND how they can be resolved. Referrals to case management come from a variety of sources including academic affairs, athletics, student organizations, instructors, and academic advisors. Students can also self refer. To contact the Case Manager, email Regina Decker at reginad@labette.edu.

ACCOMMODATION SERVICES

Services for Labette Community College students who have a documented disability from a certified professional are arranged through the ADA Coordinator in the Student Success Center. These services are provided at no cost to enrolled students on an individual basis and with respect to confidentiality. Note scribing, sign language interpreters, print magnifier, and screen reading software are among several of the accommodations available.

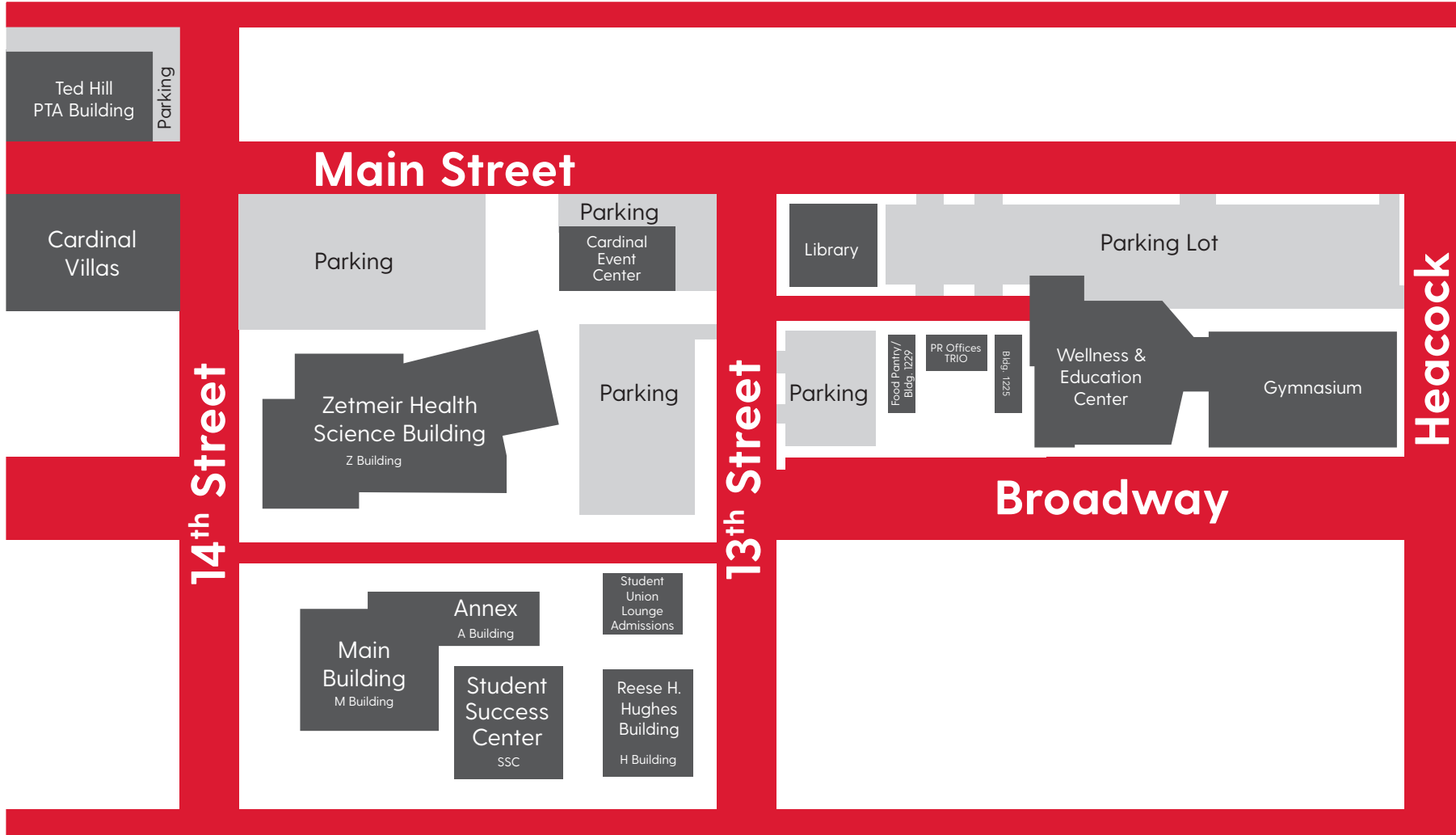
STUDENT SUCCESS CENTER

The Student Success Center provides services that assist students to succeed academically. It houses programs such as Adult Basic Education/GED, Title IV Student Support Services, and Disability Services. Students may receive free tutoring, proctored testing services, GED test preparation, ACCUPLACER placement testing, and help with transfer and career counseling. Disability accommodations are arranged by the LCC ADA Coordinator, who can be contacted by emailing karenb@labette.edu or calling 620-820-1142.



YOUR FUTURE *is waiting.*

MAIN CAMPUS MAP



Labette Community College is committed to a policy of educational equity. Accordingly, the College admits students, grants financial aid and scholarships, and conducts all educational programs, activities, and employment practices without regard to an individual's race, color, religion, gender identity, sexual orientation, national origin, age, marital status, ancestry, or disabilities.

Labette Community College is a member of the American Association of Community Colleges (AACC) and the Kansas Association of Community College Trustees (KAACT).

The Kansas Board of Regents (KBOR) · 1000 SW Jackson Street, Suite 520 · Topeka, KS · 66612-1368 · 785-269-3421 · <http://www.kansasregents.org> and The Higher Learning Commission of the North Central Association of Colleges and Schools · 30 N LaSalle Street, Suite 2400 · Chicago, IL · 60602-2504 · 800-621-7440 · <http://www.ncacihe.org>

Dental Assistant Accreditation: The program in dental assisting is accredited by the Commission on Dental Accreditation and has been awarded full accreditation without reporting requirements. The Commission is a specialized accrediting body recognized by the United States Department of Education. The Commission on Dental Accreditation can be contacted at (312) 440-4653 or at 211 East Chicago Avenue, Chicago, IL 60611. The Commission's web address is: <http://www.ada.org/100.aspx>.

Physical Therapist Assistant Accreditation: The Physical Therapist Assistant program at Labette Community College is accredited by the Commission on Accreditation in Physical Therapy Education (CAPTE), 3030 Potomac Ave., Suite 100, Alexandria, Virginia 22305-3085; telephone: 703-706-3245; email: accreditation@apta.org; website: <http://www.capteonline.org>. The program's current status is probationary accreditation; for more information see <http://www.capteonline.org/WhatWeDo/RecentActions/PublicDisclosureNotices/>. If needing to contact the program/institution directly, please call 620-820-1007 or email pta@labette.edu.

Respiratory Therapy Accreditation: The Labette Community College, CoARC program number 200304, Associates of Applied Science in Respiratory Care, Parsons, Kansas, is accredited by the Commission on Accreditation for Respiratory Care (www.coarc.com).

Nursing Accreditation: The Associate Degree Nursing Program at Labette Community College located in Parsons, Kansas is accredited by the Accreditation Commission for Education in Nursing (ACEN) | 3390 Peachtree Road NE, Suite 1400 | Atlanta, GA 30326 | (404) 975-5000, www.acenursing.org | The most recent accreditation decision made by the ACEN Board of Commissioners for the Associate Degree Nursing Program is Continuing Accreditation. View the public information disclosed by the ACEN regarding this program at <http://www.acenursing.com/accreditedprograms/programsearch.htm>

Radiography Accreditation: The Associate of Applied Science in Radiologic Technology Program is accredited by The Joint Review Committee on Education in Radiologic Technology | 20 North Wacker Drive, Suite 2850 | Chicago, IL 60606-3182 telephone (312) 704-5300 or email at: lwinter@jrcert.org | www.jrcert.org | 2021 JRCERT Standards for Educational Programs **This program is fully accredited by the Joint Review Committee on Education in Radiologic Technology and received the maximum 8-year accreditation award in 2014. Accreditation will be audited in 2022. The next site visit is tentatively scheduled for the Fourth Quarter of 2022.

Sonography Accreditation: The Labette Community College Diagnostic Medical Sonography Program is accredited by: The Commission on Accreditation of Allied Health Education Programs (CAAHEP). The program was approved March 2013. For more information contact www.CAAHEP.org.





Labette Community College - Main Campus
200 S. 14th Street · Parsons, KS 67357
1-620-421-6700 or 1-888-Labette (522-3883)

Labette Community College - Cherokee Center
7186 NE Hwy 171 · Pittsburg, KS 66762
1-620-232-5820 or 1-877-800-1070